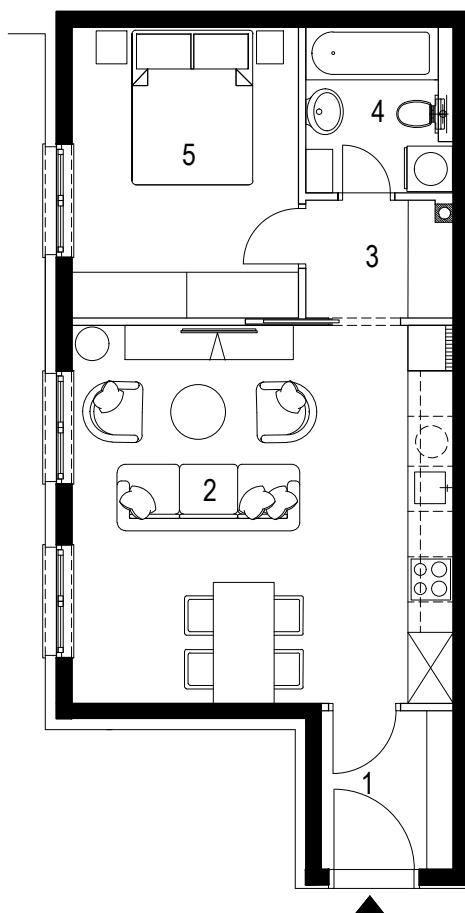




ORIJENTACIJA



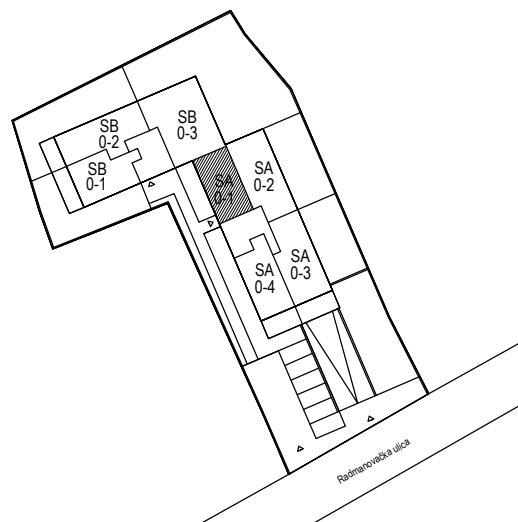
0m 1m 5m

**stan SA 0-1**

lokacija: prizemlje

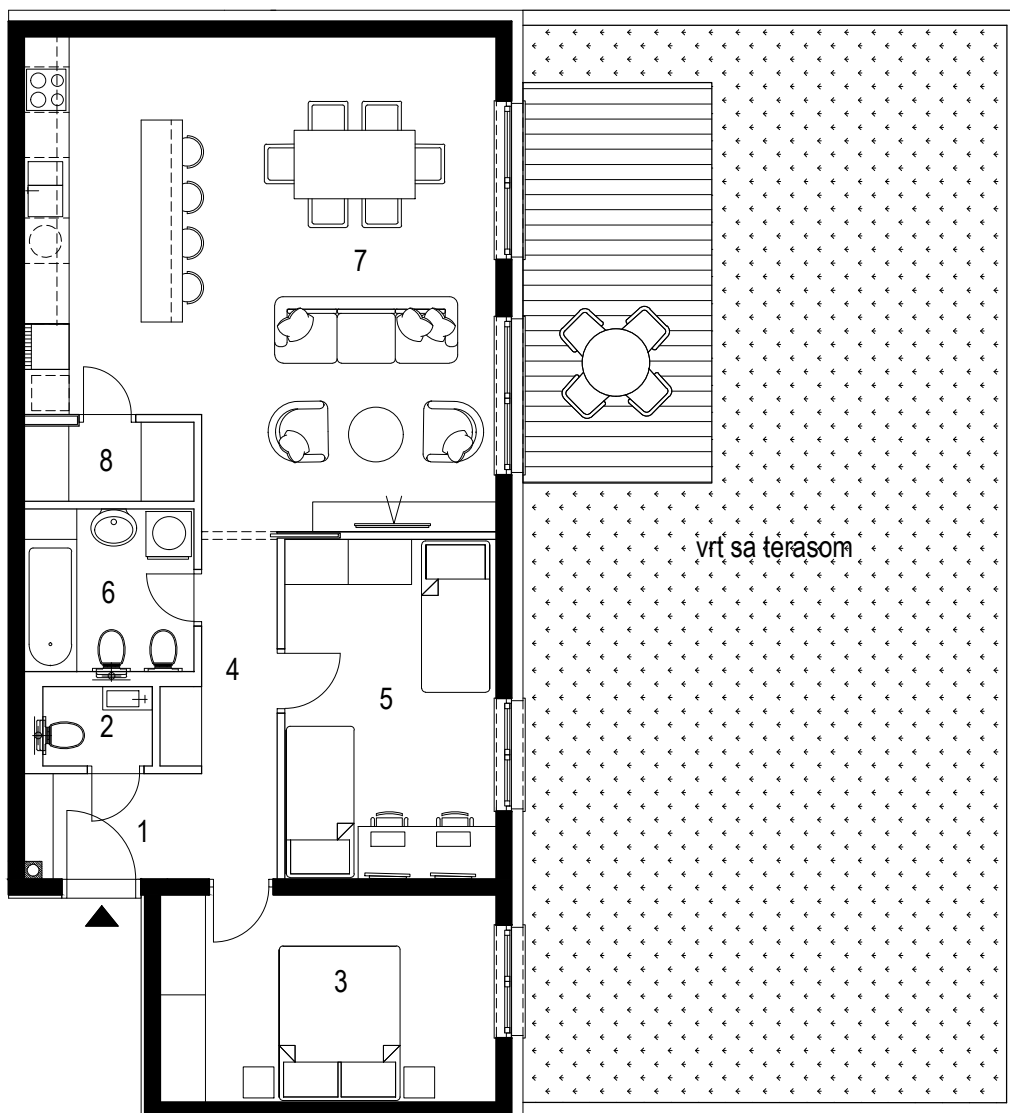
1. ulazni prostor	3.67 m <sup>2</sup>
2. d.b.+blag.+kuh.	25.24 m <sup>2</sup>
3. hodnik	2.88 m <sup>2</sup>
4. kupaonica	3.94 m <sup>2</sup>
5. spavaća soba	11.74 m <sup>2</sup>

ukupno stan:	47.47 m <sup>2</sup>
--------------	----------------------





ORIJENTACIJA

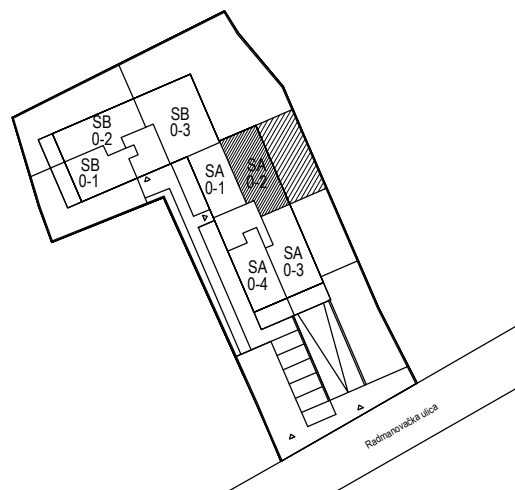


0m 1m 5m

## stan SA 0-2

lokacija: prizemlje

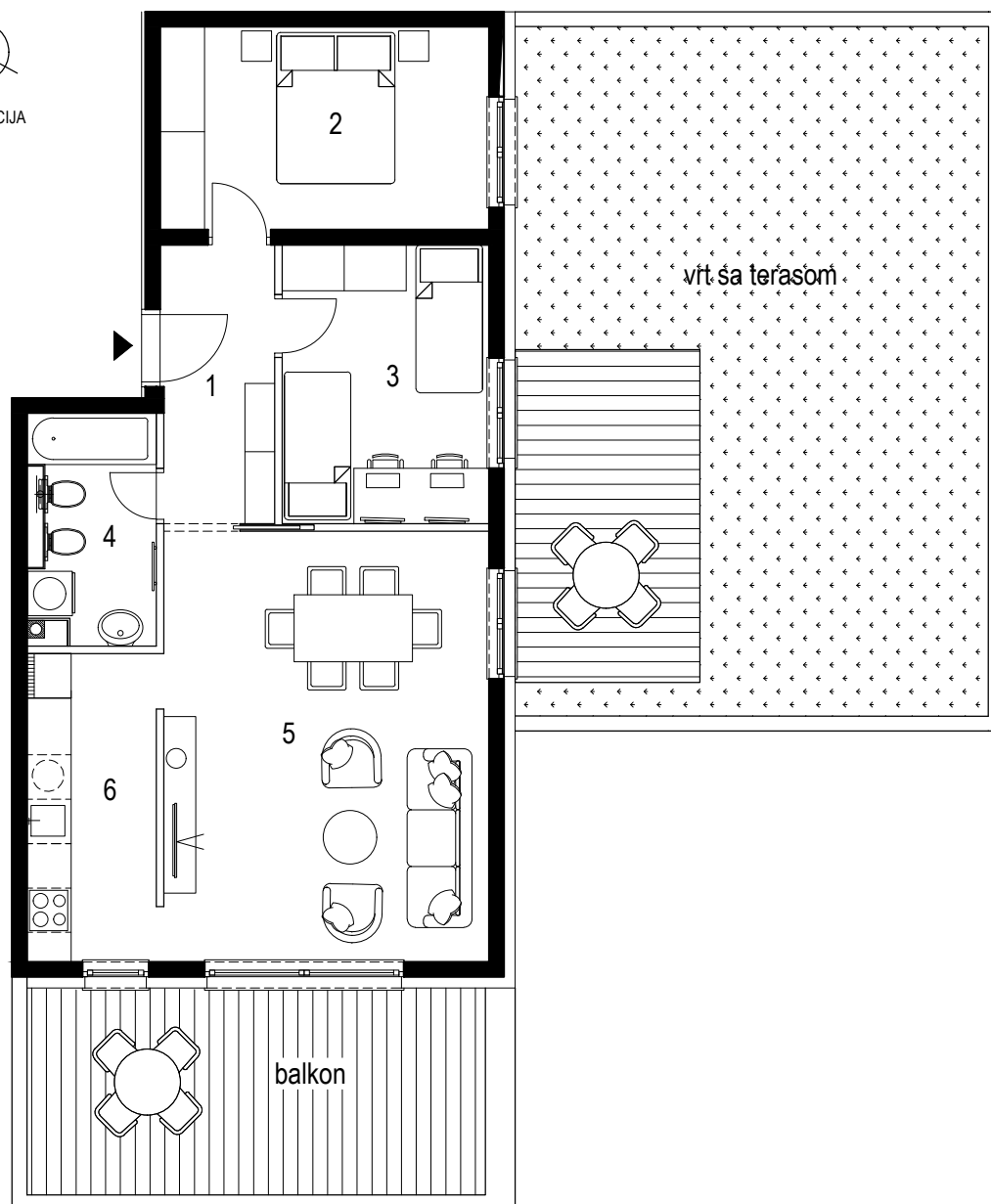
1. ulazni prostor	3.22 m <sup>2</sup>
2. wc	1.52 m <sup>2</sup>
3. spavaća soba 1	12.23 m <sup>2</sup>
4. hodnik	5.00 m <sup>2</sup>
5. spavaća soba 2	12.60 m <sup>2</sup>
6. kupaonica	4.76 m <sup>2</sup>
7. d.b.+blag.+kuh.	37.28 m <sup>2</sup>
8. spremište	2.35 m <sup>2</sup>

ukupno zatvorenih prostora 78.96 m<sup>2</sup>+ terasa 3.32 m<sup>2</sup> (13.30 x 0.25)+ vrt 7.70 m<sup>2</sup> (77.00 x 0.1)ukupno stan 89.98 m<sup>2</sup>

PROJEKT: STAMBENA GRAĐEVINA - RADMANOVAČKA ULICA br. 27 lokacija: k.č. 1617 k.o. Klara



ORIJENTACIJA



0m 1m 5m

**stan SA 0-3**

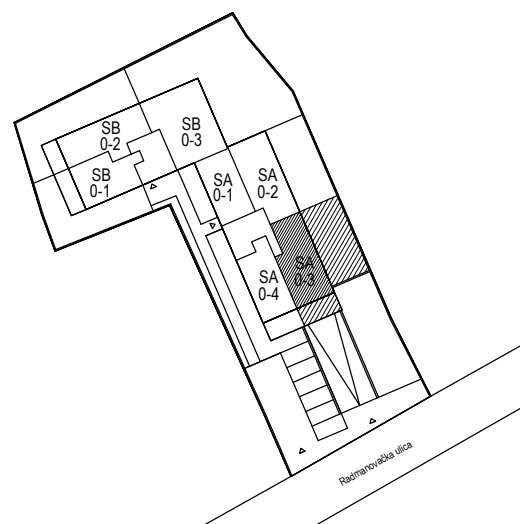
lokacija: prizemlje

1. hodnik	5.70 m <sup>2</sup>
2. spavaća soba 1	12.20 m <sup>2</sup>
3. spavaća soba 2	10.57 m <sup>2</sup>
4. kupaonica	4.94 m <sup>2</sup>
5. dn.b.+blag.	25.63 m <sup>2</sup>
6. kuhinja	7.60 m <sup>2</sup>

ukupno zatvorenih prostorija: 66.64 m<sup>2</sup>

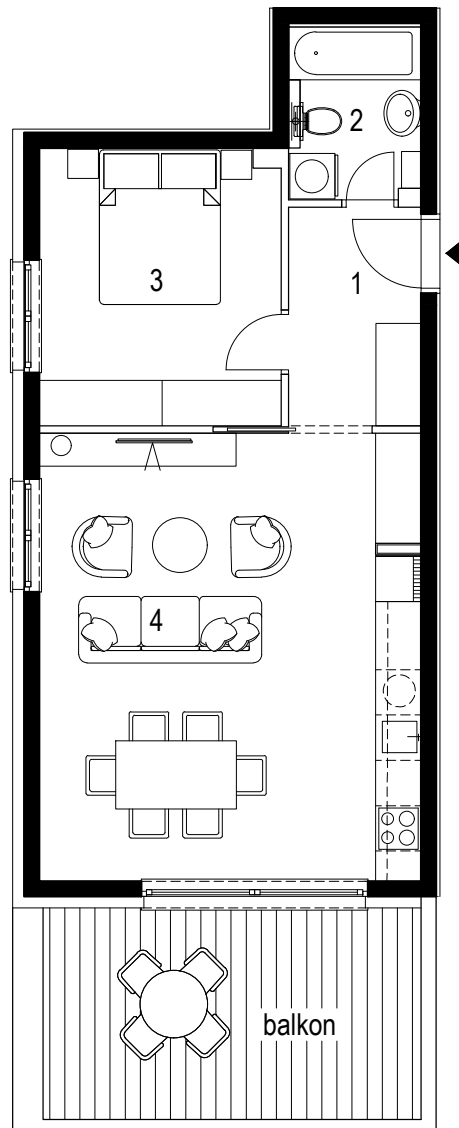
+ balkon	8.65 m <sup>2</sup>	(17.30 x 0.5)
+ terasa	2.81 m <sup>2</sup>	(11.25 x 0.25)
+ vrt	4.80 m <sup>2</sup>	(48.00 x 0.1)

ukupno stan	82.90 m <sup>2</sup>
-------------	----------------------





ORIJENTACIJA



0m 1m 5m

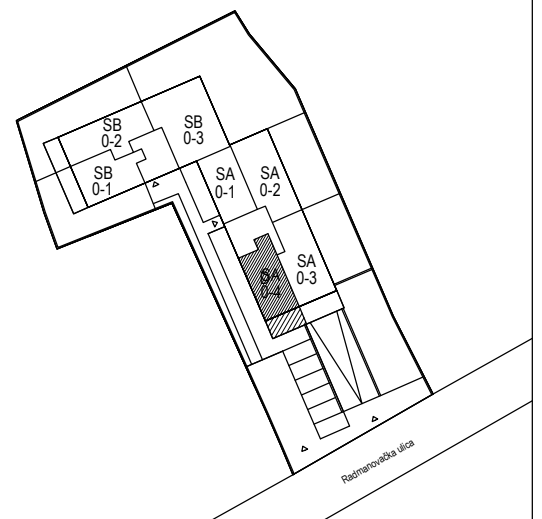
**stan SA 0-4**

lokacija: prizemlje

1. hodnik	5.05 m <sup>2</sup>
2. kupaonica	3.82 m <sup>2</sup>
3. spavaća soba	11.66 m <sup>2</sup>
4. d.b.+blag.+kuh.	29.92 m <sup>2</sup>

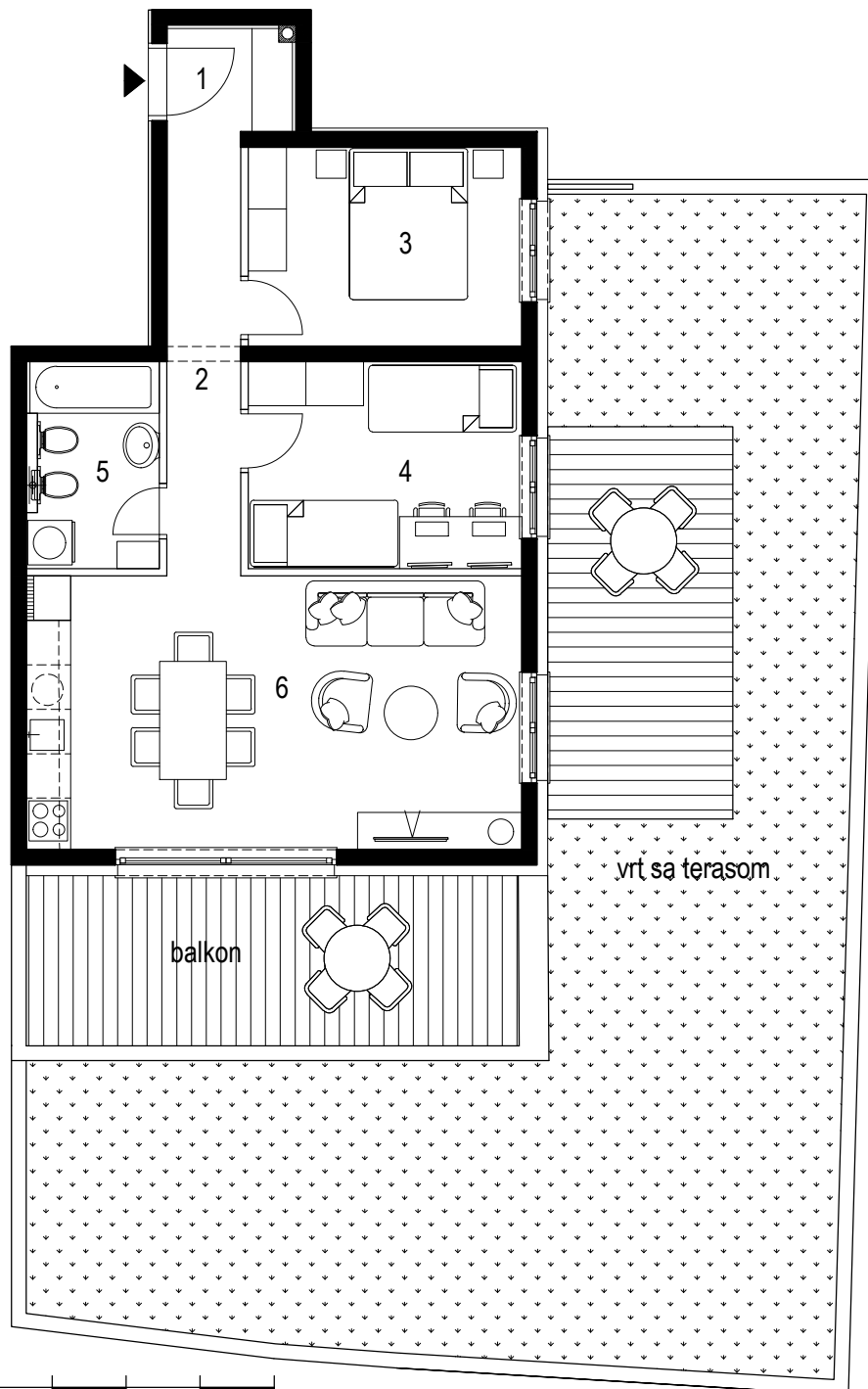
ukupno zatvorenih prostorija: 50.45 m<sup>2</sup>+ balkon 7.00 m<sup>2</sup> (14.00 x 0.5)

ukupno stan	57.45 m <sup>2</sup>
-------------	----------------------





ORIJENTACIJA



0m 1m 5m

## stan SB 0-1

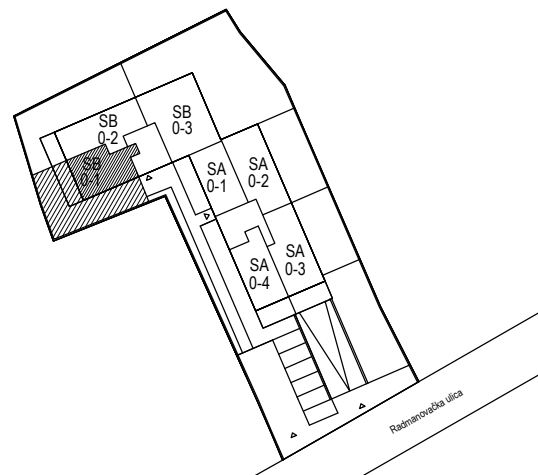
lokacija: prizemlje

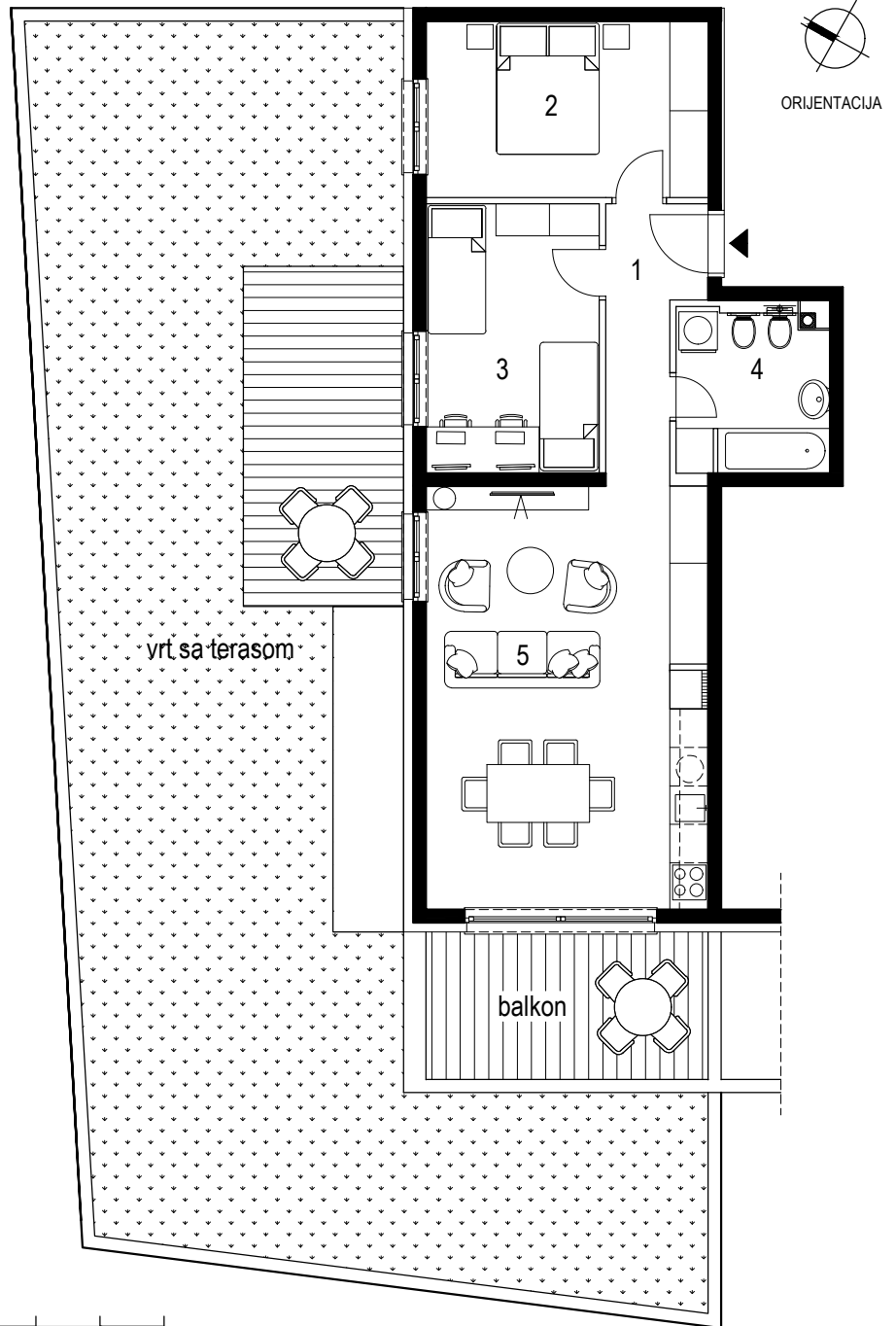
1. ulazni prostor	2.40 m <sup>2</sup>
2. hodnik	6.00 m <sup>2</sup>
3. spavaća soba 1	10.00 m <sup>2</sup>
4. spavaća soba 2	10.36 m <sup>2</sup>
5. kupaonica	4.83 m <sup>2</sup>
6. d.b.+blag.+kuh.	24.79 m <sup>2</sup>

ukupno zatvorenih prostorija: 58.38 m<sup>2</sup>

+ balkon	7.65 m <sup>2</sup>	(15.30 x 0.5)
+ terasa	3.31 m <sup>2</sup>	(13.25 x 0.25)
+ vrt	7.60 m <sup>2</sup>	(76.00 x 0.1)

ukupno stan 76.94 m<sup>2</sup>





0m 1m 5m

### stan SB 0-2

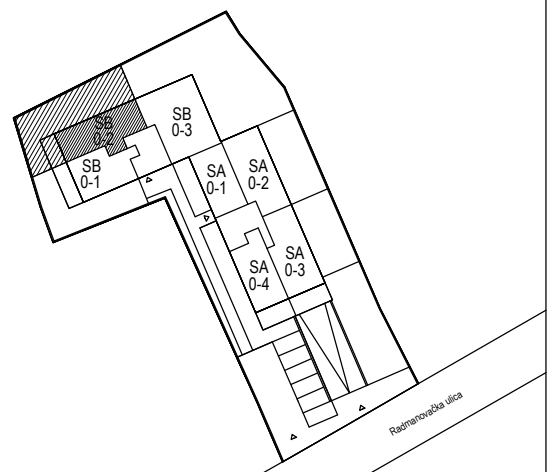
lokacija: prizemlje

1. hodnik	5.30 m <sup>2</sup>
2. spavaća soba 1	12.10 m <sup>2</sup>
3. spavaća soba 2	11.34 m <sup>2</sup>
4. kupaonica	5.90 m <sup>2</sup>
5. d.b.+blag.+kuh.	29.00 m <sup>2</sup>

ukupno zatvorenih prostorija: 63.64 m<sup>2</sup>

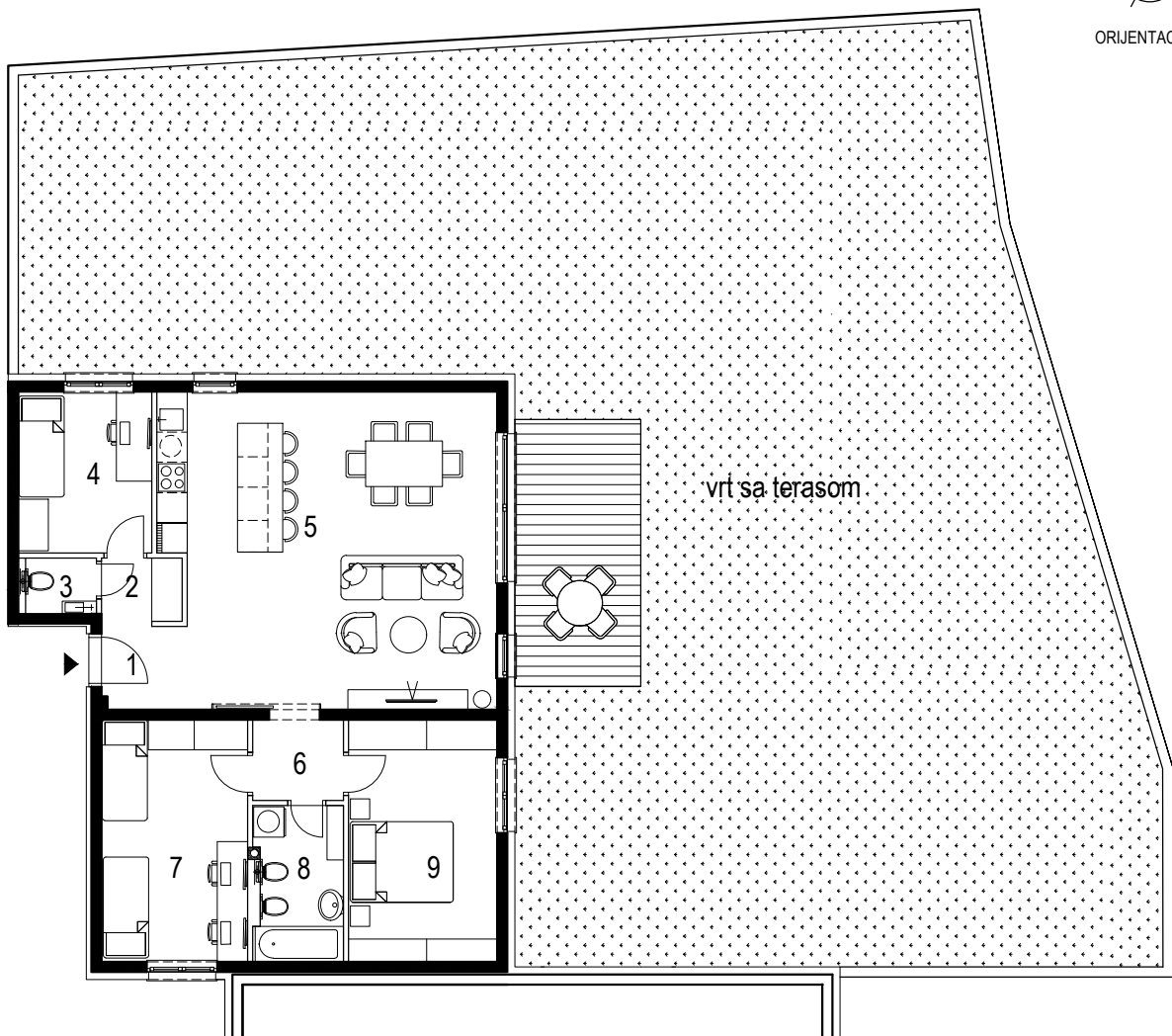
+ balkon	5.00 m <sup>2</sup> ( 10.00 x 0.5)
+ terasa	3.31 m <sup>2</sup> (13.25 x 0.25)
+ vrt	9.80 m <sup>2</sup> (98.00 x 0.1)

ukupno stan 81.75 m<sup>2</sup>





ORIJENTACIJA



0m 1m 5m

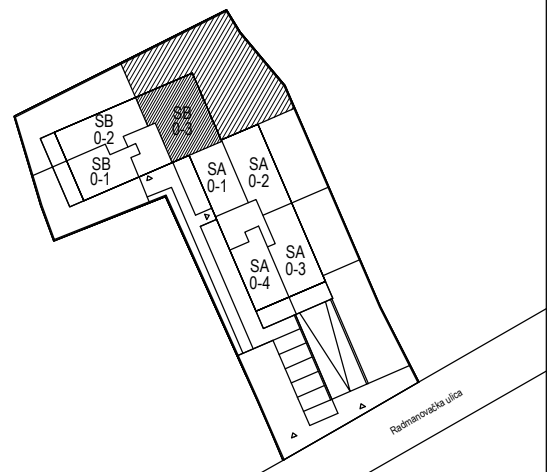
**stan SB 0-3**

lokacija: prizemlje

1. ulazni prostor	2.77 m <sup>2</sup>
2. hodnik	1.97 m <sup>2</sup>
3. wc	1.54 m <sup>2</sup>
4. spavaća soba 1	8.48 m <sup>2</sup>
5. d.b.+blag.+kuh.	40.66 m <sup>2</sup>
6. hodnik	2.85 m <sup>2</sup>
7. spavaća soba 2	13.92 m <sup>2</sup>
8. kupaonica	5.30 m <sup>2</sup>
9. spavaća soba 3	14.15 m <sup>2</sup>

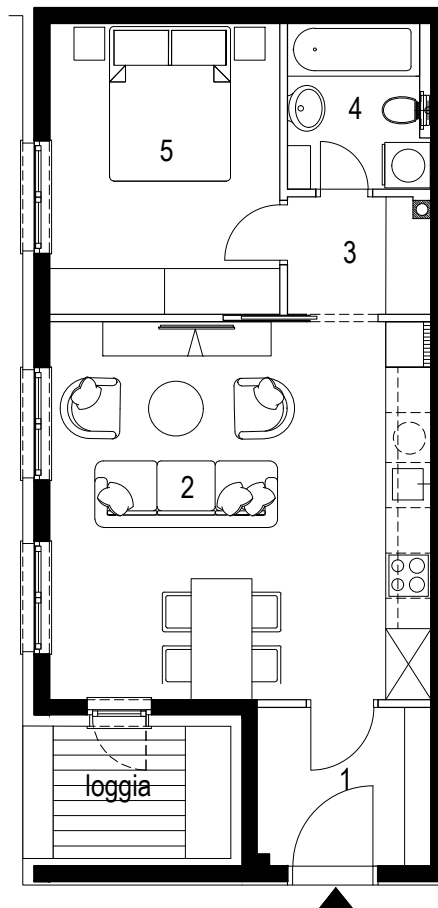
ukupno zatvorenih prostorija: 91.64 m<sup>2</sup>+ terasa 3.31 m<sup>2</sup> (13.25 x 0.25)+ vrt 25.40 m<sup>2</sup> (254.00 x 0.1)

ukupno stan	120.35 m <sup>2</sup>
-------------	-----------------------





ORIJENTACIJA

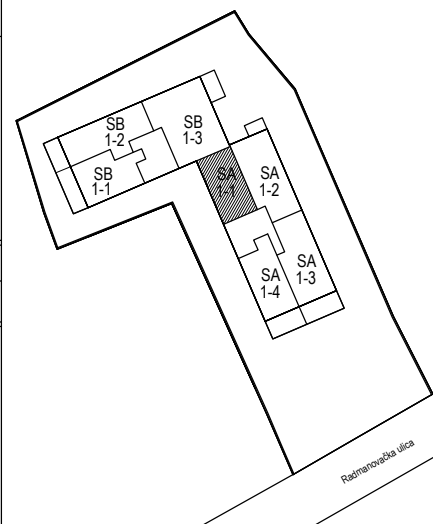
**stan SA 1-1**

lokacija: 1. kat

1. ulazni prostor	3.67 m <sup>2</sup>
2. d.b.+blag.+kuh.	25.24 m <sup>2</sup>
3. hodnik	2.88 m <sup>2</sup>
4. kupaonica	3.94 m <sup>2</sup>
5. spavaća soba	11.74 m <sup>2</sup>

ukupno zatvorenih prostorija: 47.47 m<sup>2</sup>+ loggia 3.08 m<sup>2</sup> (4.11 x 0.75)

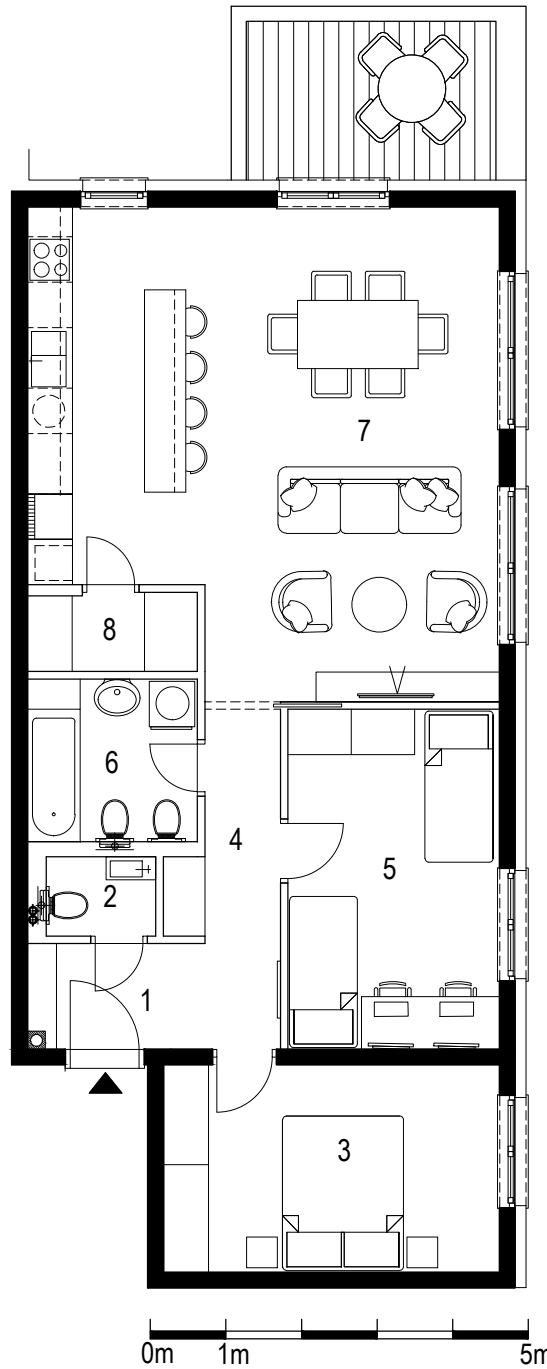
ukupno stan:	50.55 m <sup>2</sup>
--------------	----------------------







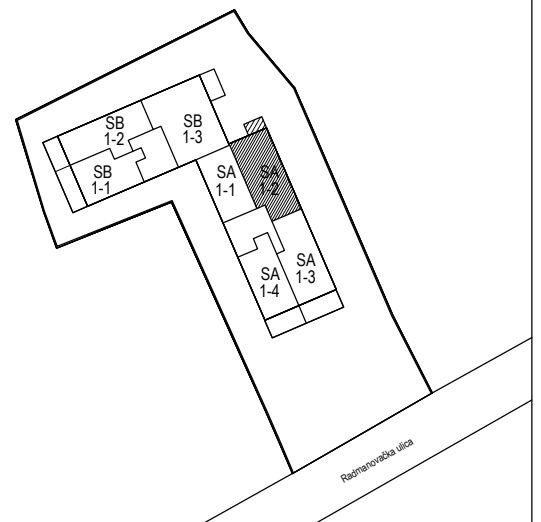
ORIJENTACIJA



## stan SA 1-2

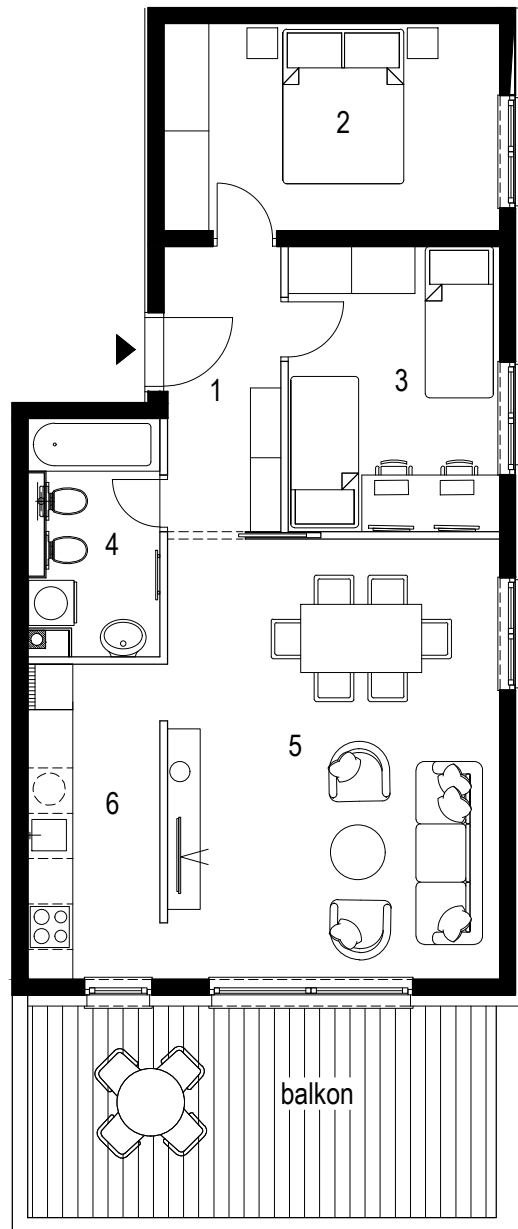
lokacija: 1. kat

1. ulazni prostor	3.22 m <sup>2</sup>
2. wc	1.52 m <sup>2</sup>
3. spavaća soba 1	12.23 m <sup>2</sup>
4. hodnik	5.00 m <sup>2</sup>
5. spavaća soba 2	12.60 m <sup>2</sup>
6. kupaonica	4.76 m <sup>2</sup>
7. d.b.+blag.+kuh.	37.28 m <sup>2</sup>
8. spremište	2.35 m <sup>2</sup>

ukupno zatvorenih prostorija: 78.96 m<sup>2</sup>+ balkon 3.46 m<sup>2</sup> (6.93 x 0.5)ukupno stan: 82.42 m<sup>2</sup>



ORIJENTACIJA

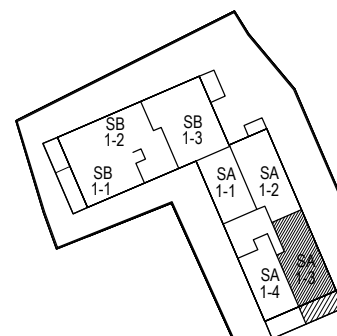


0m 1m 5m

## stan SA 1-3

lokacija: 1. kat

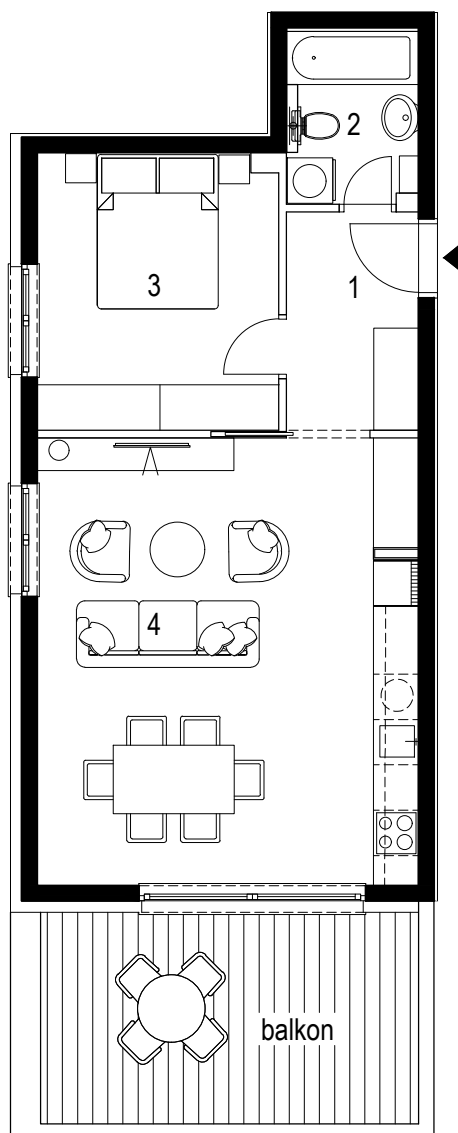
1. hodnik	5.70 m <sup>2</sup>
2. spavaća soba 1	12.20 m <sup>2</sup>
3. spavaća soba 2	10.57 m <sup>2</sup>
4. kupaonica	4.94 m <sup>2</sup>
5. dn.b.+blag.	25.63 m <sup>2</sup>
6. kuhinja	7.60 m <sup>2</sup>
ukupno zatvorenih prostorija:	66.64 m <sup>2</sup>
+ balkon	8.65 m <sup>2</sup> (17.30 x 0.5)
<b>ukupno stan:</b>	<b>75.29 m<sup>2</sup></b>



Radmanovačka ulica



ORIJENTACIJA



0m 1m 5m

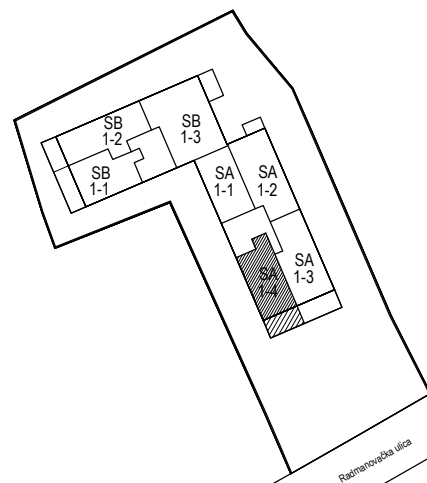
## stan SA 1-4

lokacija: 1. kat

1. hodnik	5.05 m <sup>2</sup>
2. kupaonica	3.82 m <sup>2</sup>
3. spavaća soba	11.66 m <sup>2</sup>
4. d.b.+blag.+kuh.	29.92 m <sup>2</sup>

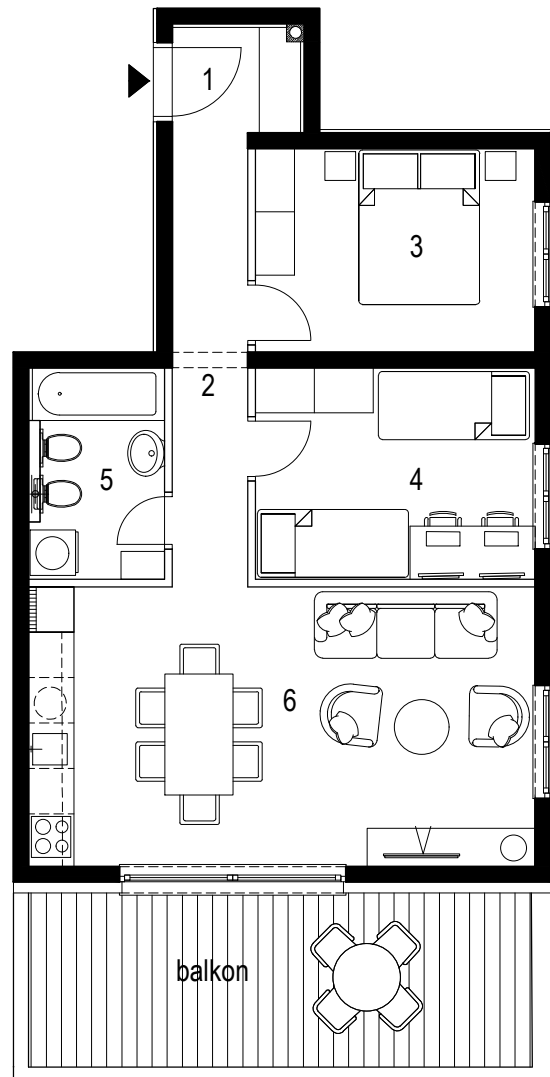
ukupno zatvorenih prostorija: 50.45 m<sup>2</sup>+ balkon 7.00 m<sup>2</sup> (14.00 x 0.5)

ukupno stan:	57.45 m <sup>2</sup>
--------------	----------------------



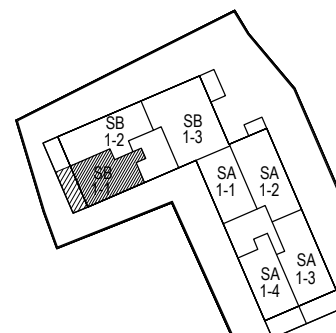


ORIJENTACIJA

**stan SB 1-1**

lokacija: 1. kat

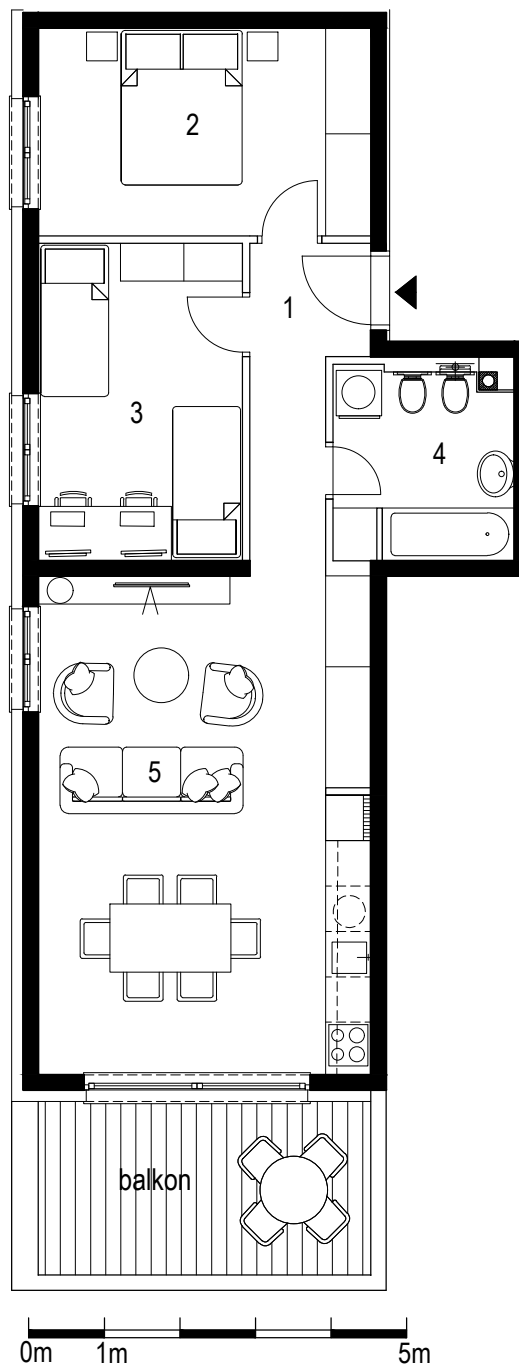
1. ulazni prostor	2.40 m <sup>2</sup>
2. hodnik	6.00 m <sup>2</sup>
3. spavaća soba 1	10.00 m <sup>2</sup>
4. spavaća soba 2	10.36 m <sup>2</sup>
5. kupaonica	4.83 m <sup>2</sup>
6. d.b.+blag.+kuh.	24.79 m <sup>2</sup>

ukupno zatvorenih prostorija: 58.38 m<sup>2</sup>+ balkon 7.65 m<sup>2</sup> (15.30 x 0.5)ukupno stan: 66.03 m<sup>2</sup>

Radmanovačka ulica



ORIJENTACIJA

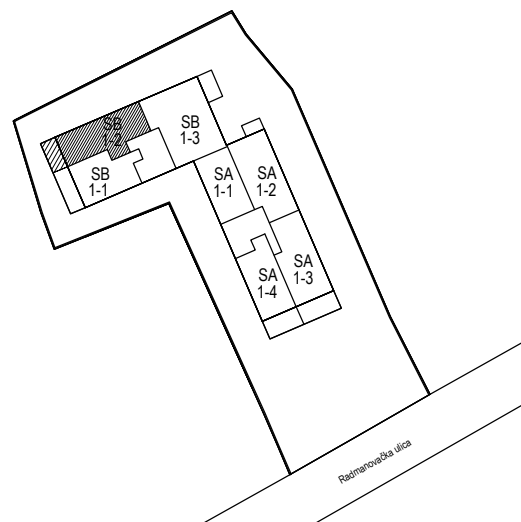
**stan SB 1-2**

lokacija: 1. kat

1. hodnik	5.30 m <sup>2</sup>
2. spavaća soba 1	12.10 m <sup>2</sup>
3. spavaća soba 2	11.34 m <sup>2</sup>
4. kupaonica	5.90 m <sup>2</sup>
5. d.b.+blag.+kuh.	29.00 m <sup>2</sup>

ukupno zatvorenih prostorija: 63.64 m<sup>2</sup>+ balkon 5.00 m<sup>2</sup> ( 10.00 x 0.5)

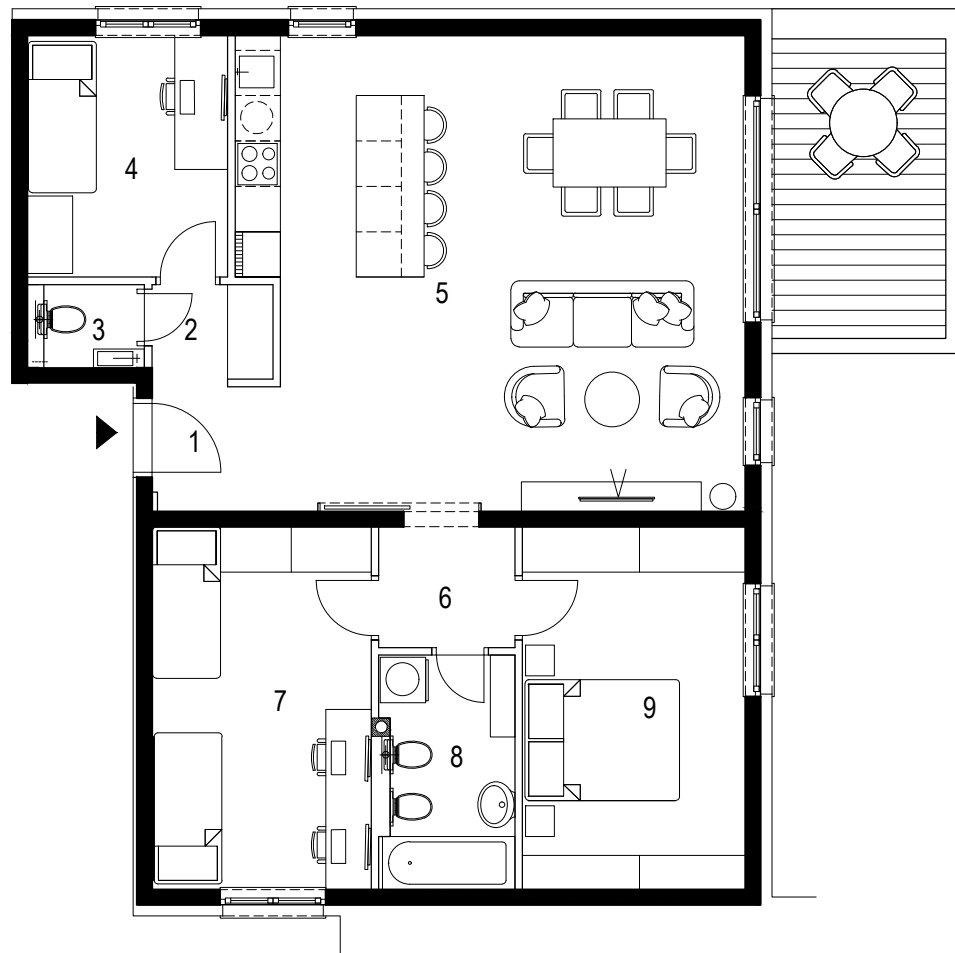
ukupno stan:	68.64 m <sup>2</sup>
--------------	----------------------





ORIJENTACIJA

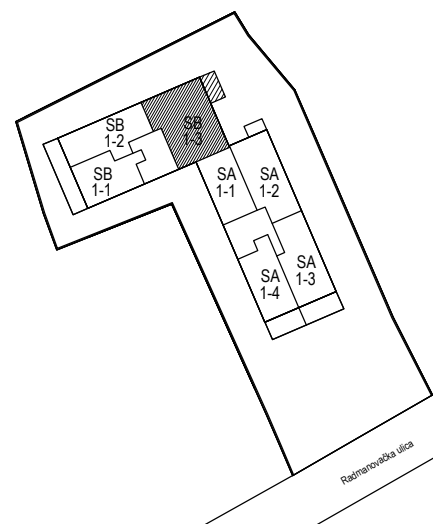
## VARIJANTA 2



## stan SB 1-3

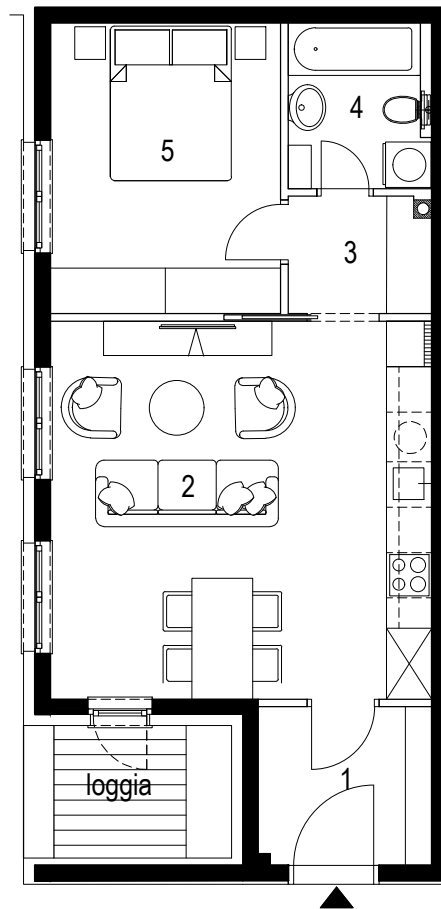
lokacija: 1. kat

1. ulazni prostor	2.77 m <sup>2</sup>
2. hodnik	1.97 m <sup>2</sup>
3. wc	1.54 m <sup>2</sup>
4. spavaća soba 1	8.48 m <sup>2</sup>
5. d.b.+blag.+kuh.	40.66 m <sup>2</sup>
6. hodnik	2.85 m <sup>2</sup>
7. spavaća soba 2	13.92 m <sup>2</sup>
8. kupaonica	5.30 m <sup>2</sup>
9. spavaća soba 3	14.15 m <sup>2</sup>
ukupno zatvorenih prostorija:	91.64 m <sup>2</sup>
+ balkon	4.50 m <sup>2</sup> (9.00 x 0.5)
<b>ukupno stan:</b>	<b>96.14 m<sup>2</sup></b>





ORIJENTACIJA

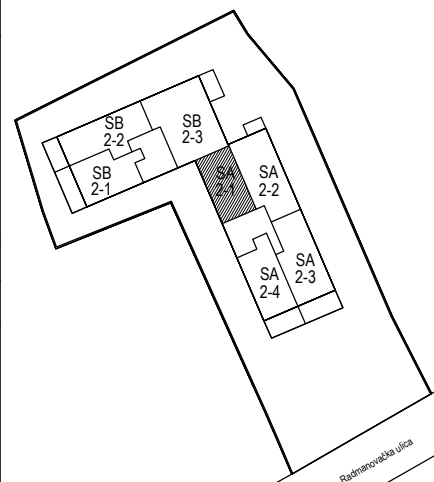
**stan SA 2-1**

lokacija: 2. kat

1. ulazni prostor	3.67 m <sup>2</sup>
2. d.b.+blag.+kuh.	25.24 m <sup>2</sup>
3. hodnik	2.88 m <sup>2</sup>
4. kupaonica	3.94 m <sup>2</sup>
5. spavaća soba	11.74 m <sup>2</sup>

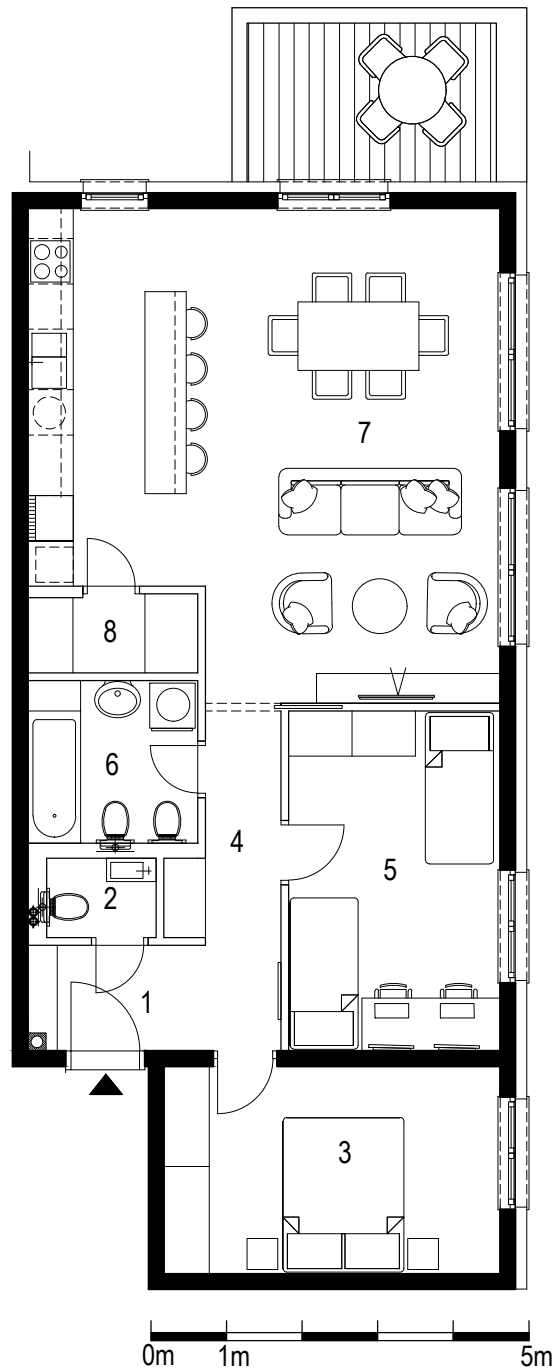
ukupno zatvorenih prostorija: 47.47 m<sup>2</sup>+ loggia 3.08 m<sup>2</sup> (4.11 x 0.75)

ukupno stan:	50.55 m <sup>2</sup>
--------------	----------------------





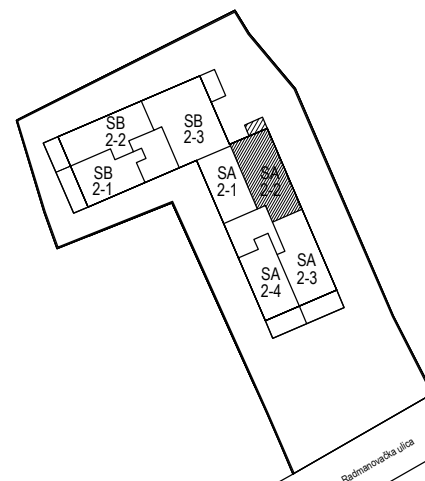
ORIJENTACIJA



## stan SA 2-2

lokacija: 2. kat

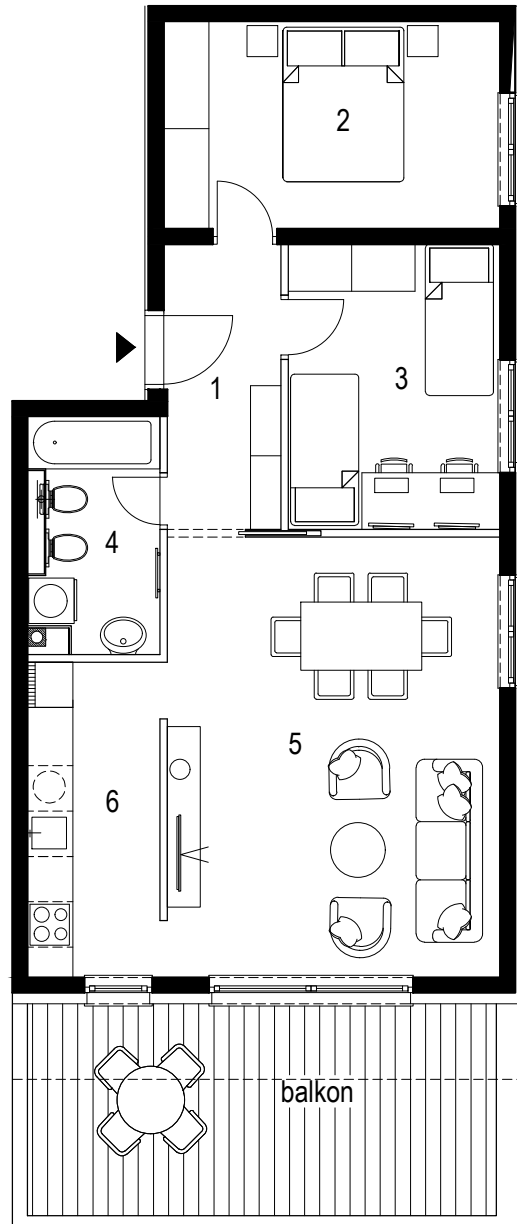
1. ulazni prostor	3.22 m <sup>2</sup>
2. wc	1.52 m <sup>2</sup>
3. spavaća soba 1	12.23 m <sup>2</sup>
4. hodnik	5.00 m <sup>2</sup>
5. spavaća soba 2	12.60 m <sup>2</sup>
6. kupaonica	4.76 m <sup>2</sup>
7. d.b.+blag.+kuh.	37.28 m <sup>2</sup>
8. spremište	2.35 m <sup>2</sup>

ukupno zatvorenih prostorija: 78.96 m<sup>2</sup>+ balkon 3.46 m<sup>2</sup> (6.93 x 0.5)ukupno stan: 82.42 m<sup>2</sup>





ORIJENTACIJA

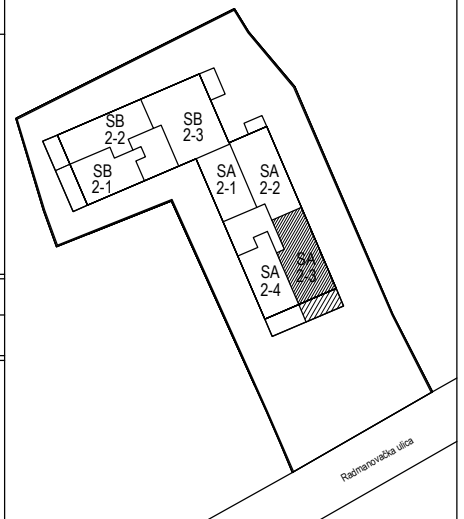
**stan SA 2-3**

lokacija: 2. kat

1. hodnik	5.70 m <sup>2</sup>
2. spavaća soba 1	12.20 m <sup>2</sup>
3. spavaća soba 2	10.57 m <sup>2</sup>
4. kupaonica	4.94 m <sup>2</sup>
5. dn.b.+blag.	25.63 m <sup>2</sup>
6. kuhinja	7.60 m <sup>2</sup>

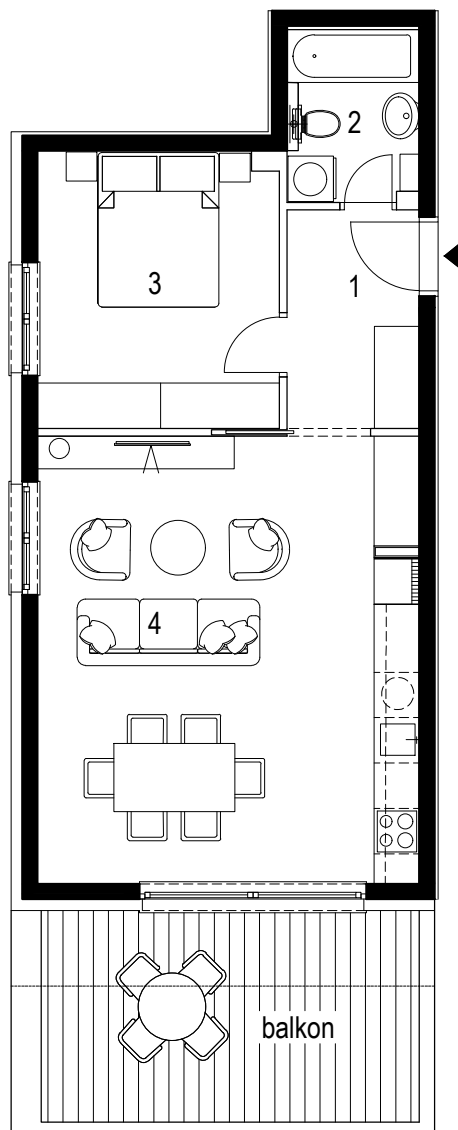
ukupno zatvorenih prostorija: 66.64 m<sup>2</sup>+ balkon 6.80 m<sup>2</sup> (6.20 x 0.5+11.2 x 0.25)

ukupno stan:	73.44 m <sup>2</sup>
--------------	----------------------





ORIJENTACIJA



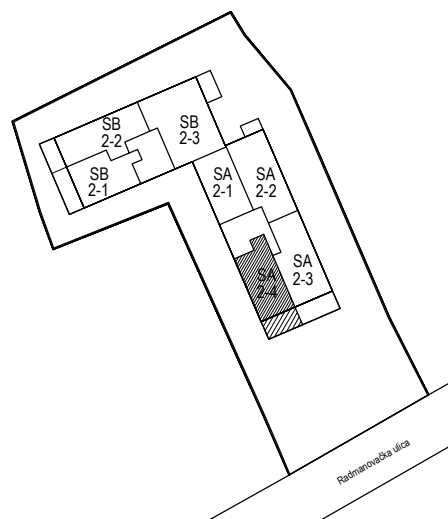
## stan SA 2-4

lokacija: 2. kat

1. hodnik	5.05 m <sup>2</sup>
2. kupaonica	3.82 m <sup>2</sup>
3. spavaća soba	11.66 m <sup>2</sup>
4. d.b.+blag.+kuh.	29.92 m <sup>2</sup>

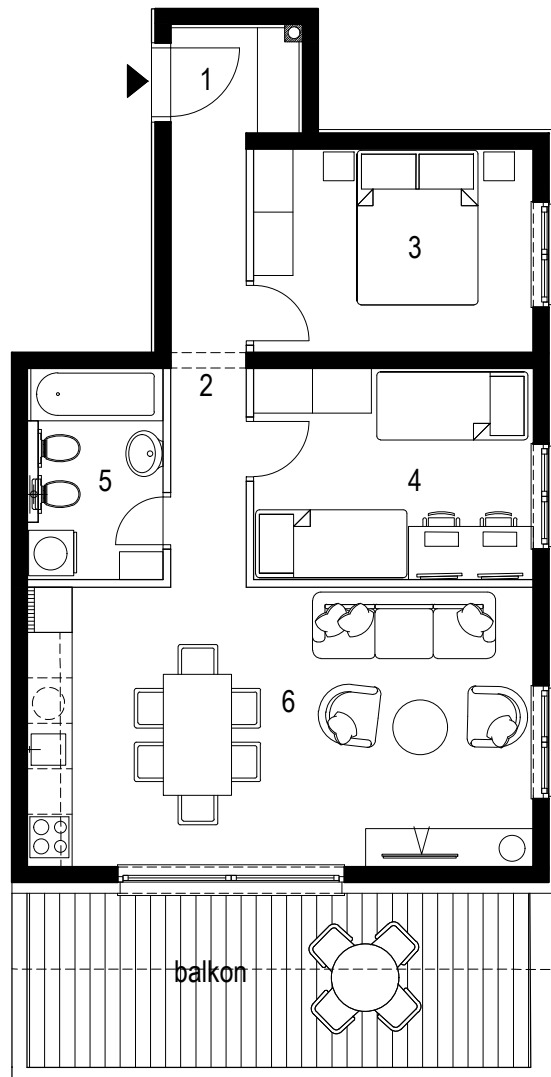
ukupno zatvorenih prostorija: 50.45 m<sup>2</sup>+ balkon 5.00 m<sup>2</sup> (5.00 x 0.5 + 9.00 x 0.25)

ukupno stan:	55.45 m <sup>2</sup>
--------------	----------------------





ORIJENTACIJA

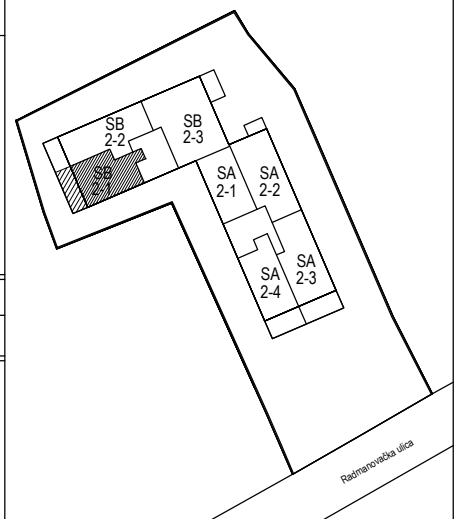
**stan SB 2-1**

lokacija: 2. kat

1. ulazni prostor	2.40 m <sup>2</sup>
2. hodnik	6.00 m <sup>2</sup>
3. spavaća soba 1	10.00 m <sup>2</sup>
4. spavaća soba 2	10.36 m <sup>2</sup>
5. kupaonica	4.83 m <sup>2</sup>
6. d.b.+blag.+kuh.	24.79 m <sup>2</sup>

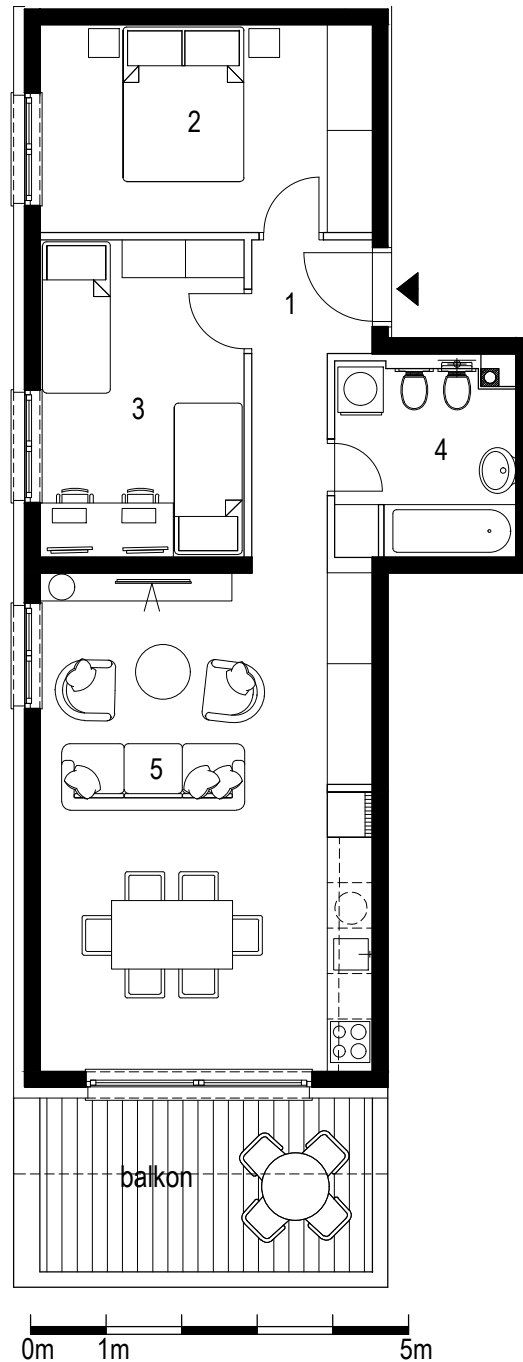
ukupno zatvorenih prostorija: 58.38 m<sup>2</sup>+ balkon 5.45 m<sup>2</sup> (6.60 x 0.5+ 8.6 x 0.25)

ukupno stan:	63.83 m <sup>2</sup>
--------------	----------------------





ORIJENTACIJA

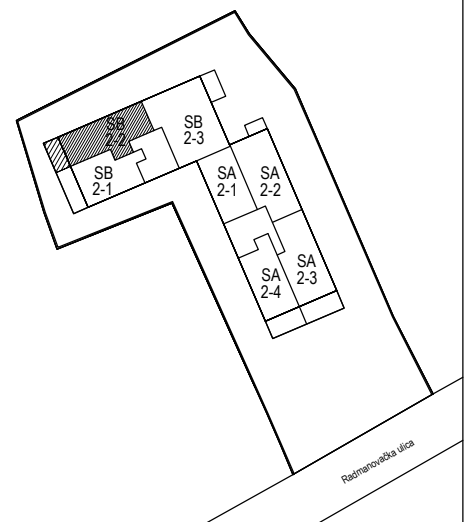
**stan SB 2-2**

lokacija: 2. kat

1. hodnik	5.30 m <sup>2</sup>
2. spavaća soba 1	12.10 m <sup>2</sup>
3. spavaća soba 2	11.34 m <sup>2</sup>
4. kupaonica	5.90 m <sup>2</sup>
5. d.b.+blag.+kuh.	29.00 m <sup>2</sup>

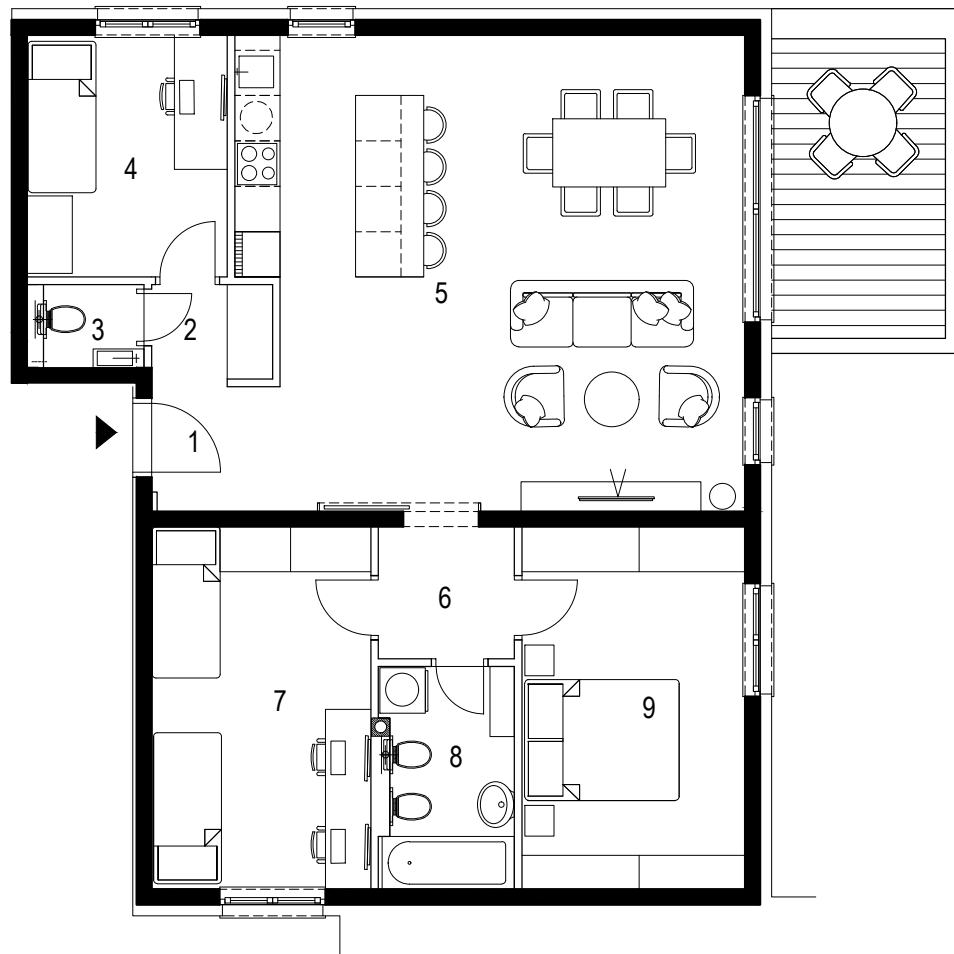
ukupno zatvorenih prostorija: 63.64 m<sup>2</sup>+ balkon 3.62 m<sup>2</sup> (4.40 x 0.5 + 5.7 x 0.25)

ukupno stan:	67.26 m <sup>2</sup>
--------------	----------------------





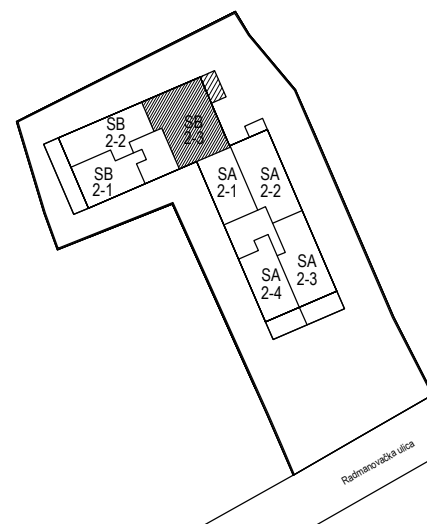
## VARIJANTA 2



## stan SB 2-3

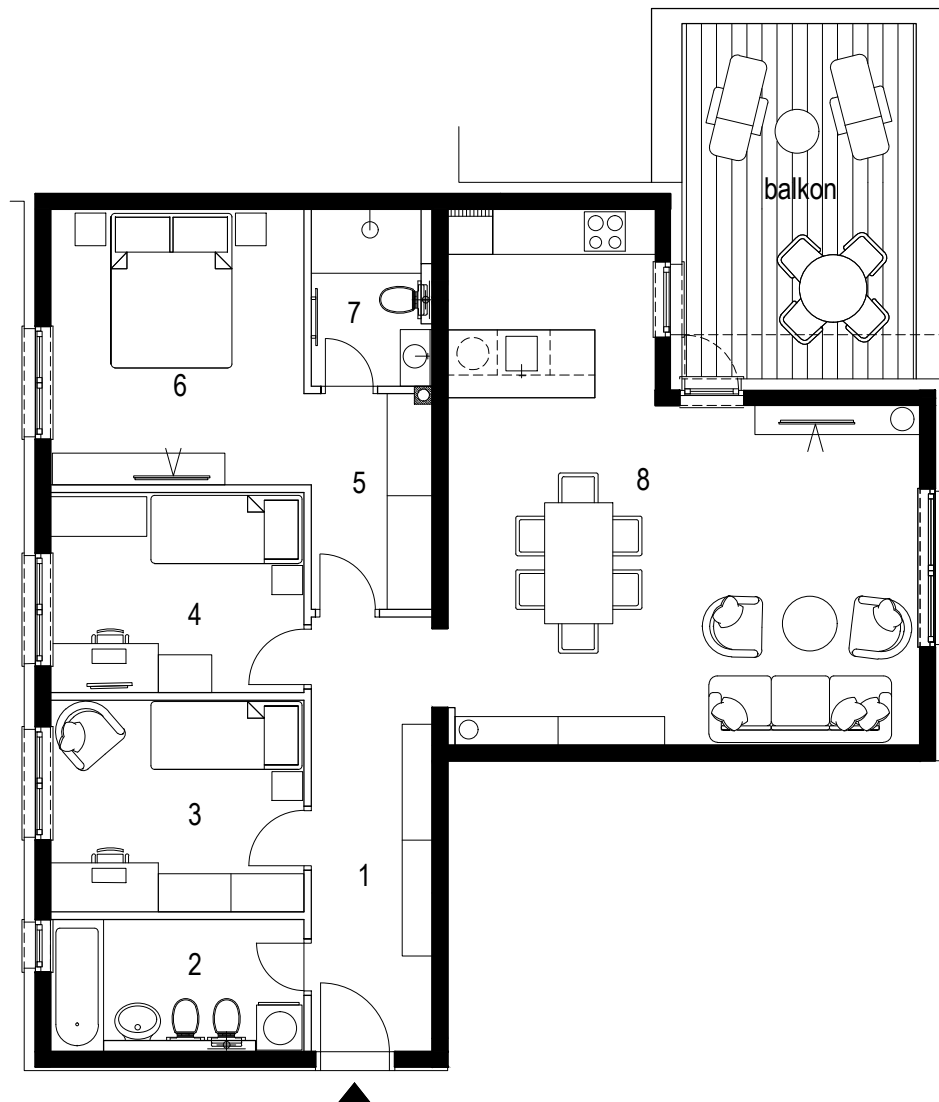
lokacija: 2. kat

1. ulazni prostor	2.77 m <sup>2</sup>
2. hodnik	1.97 m <sup>2</sup>
3. wc	1.54 m <sup>2</sup>
4. spavaća soba 1	8.48 m <sup>2</sup>
5. d.b.+blag.+kuh.	40.66 m <sup>2</sup>
6. hodnik	2.85 m <sup>2</sup>
7. spavaća soba 2	13.92 m <sup>2</sup>
8. kupaonica	5.30 m <sup>2</sup>
9. spavaća soba 3	14.15 m <sup>2</sup>

ukupno zatvorenih prostorija: 91.64 m<sup>2</sup>+ balkon 4.50 m<sup>2</sup> (9.00 x 0.5)ukupno stan: 96.14 m<sup>2</sup>



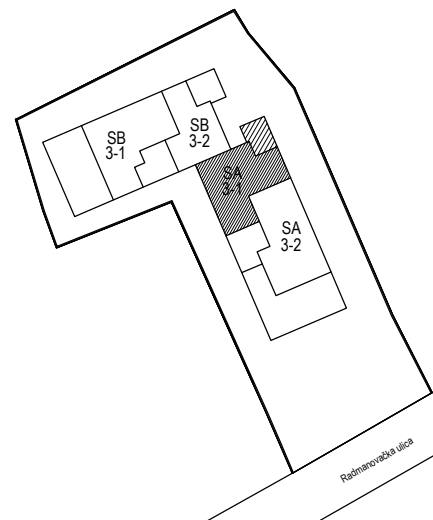
ORIJENTACIJA

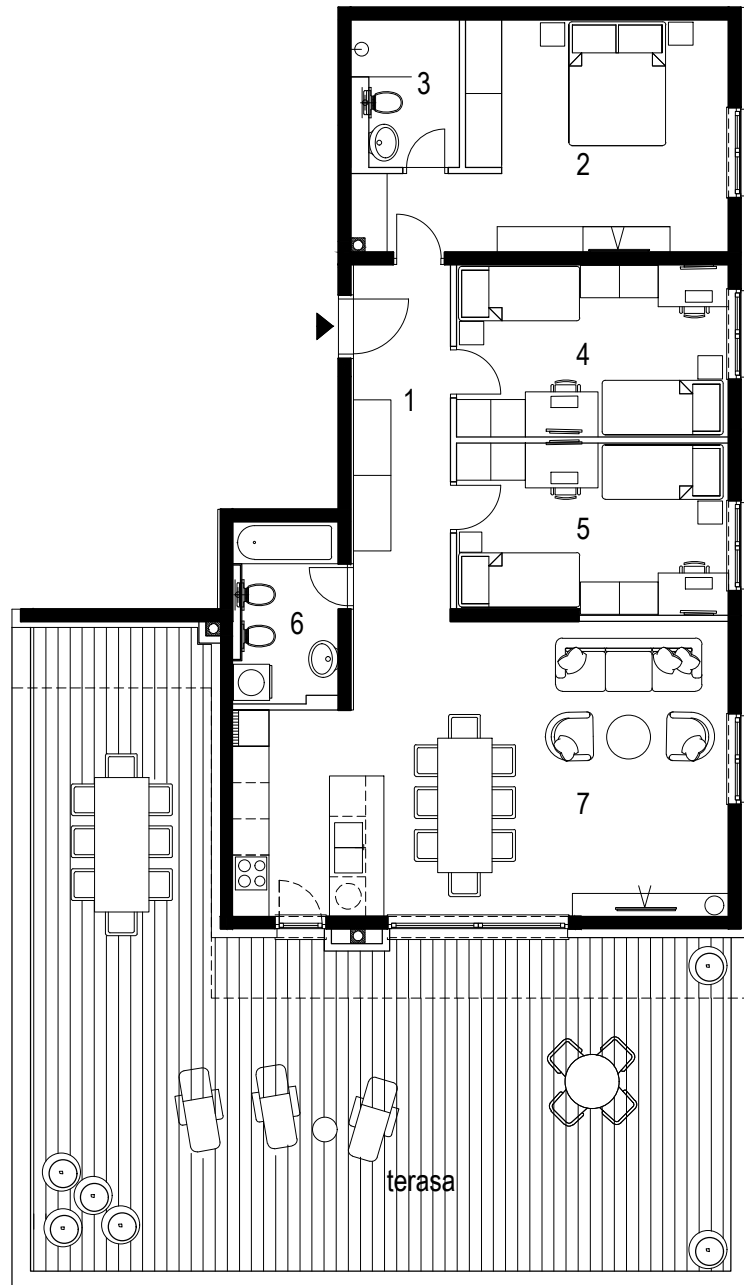


## stan SA 3-1

lokacija: uvučeni kat

1. hodnik	9.20 m <sup>2</sup>
2. kupaonica	5.50 m <sup>2</sup>
3. spavaća soba 1	9.37 m <sup>2</sup>
4. spavaća soba 2	8.87 m <sup>2</sup>
5. garderoba	4.50 m <sup>2</sup>
6. spavaća soba 3	12.18 m <sup>2</sup>
7. kupaonica	3.50 m <sup>2</sup>
8. d.b.+blag.+kuh.	35.21 m <sup>2</sup>

ukupno zatvorenih prostorija: 88.33 m<sup>2</sup>+ balkon 4.08 m<sup>2</sup> (1.8 x 0.5) +  
(12.75 x 0.25)ukupno stan : 92.41 m<sup>2</sup>



0m 1m 5m

### stan SA 3-2

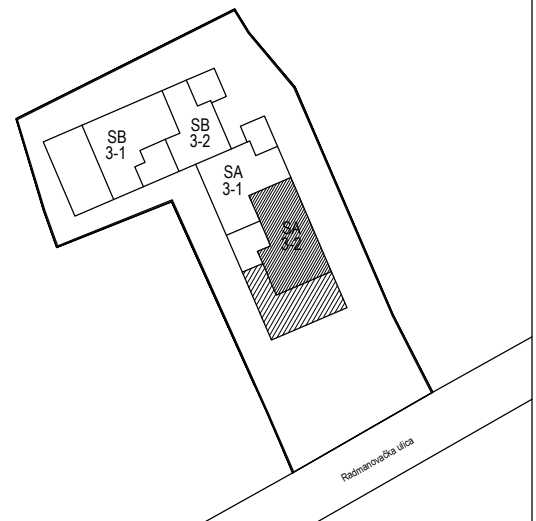
lokacija: uvučeni kat

1. hodnik	9.44 m <sup>2</sup>
2. spavaća soba 1	19.10 m <sup>2</sup>
3. kupaonica	3.95 m <sup>2</sup>
4. spavaća soba 2	12.82 m <sup>2</sup>
5. spavaća soba 3	12.51 m <sup>2</sup>
6. kupaonica	4.90 m <sup>2</sup>
7. d.b.+blag.+kuh.	37.00 m <sup>2</sup>

ukupno zatvorenih prostorija: 99.72 m<sup>2</sup>

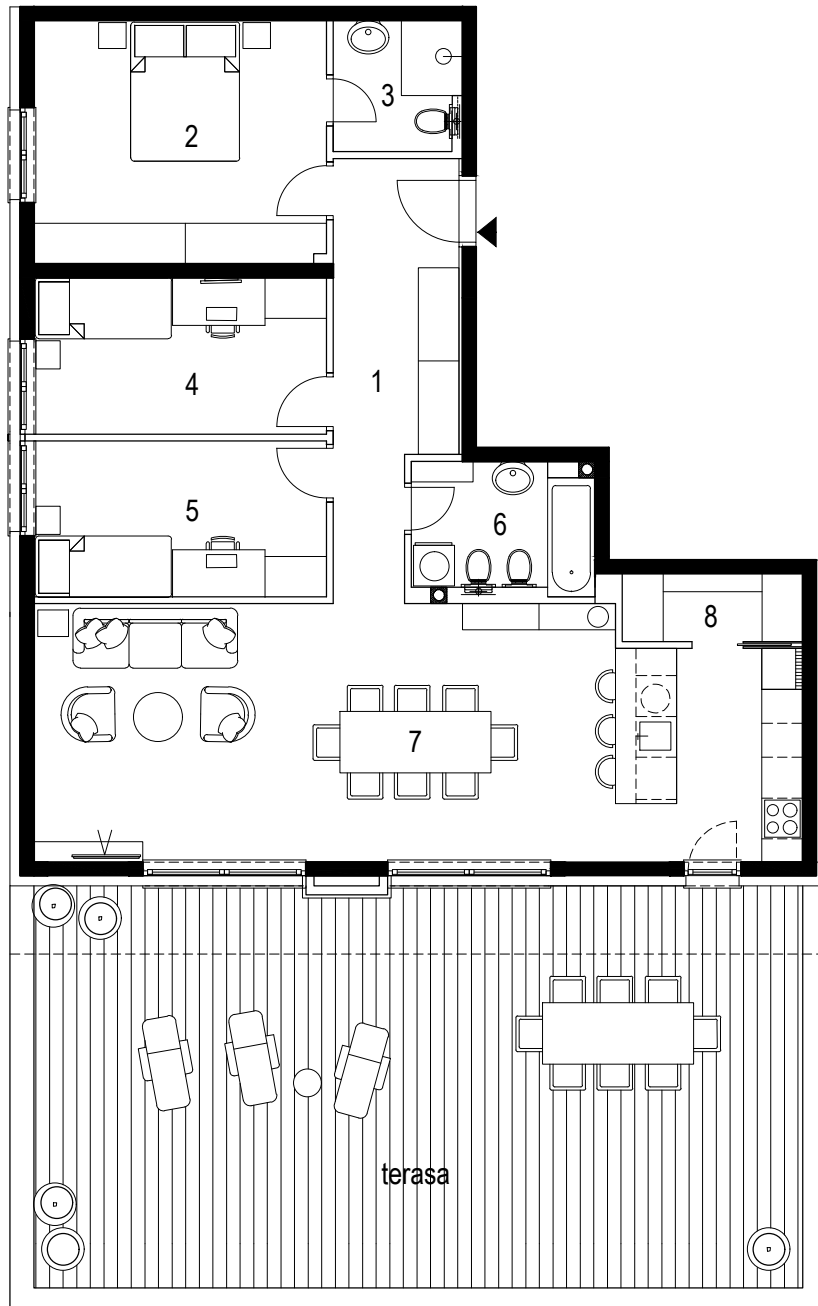
+ terasa 22.49 m<sup>2</sup> (11.20 x 0.5) +  
(67.57 x 0.25)

ukupno stan : 122.21 m<sup>2</sup>





ORIJENTACIJA

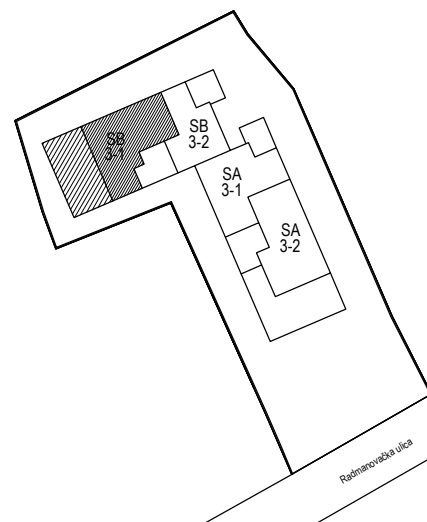


0m 1m 5m

**stan SB 3-1**

lokacija: uvučeni kat

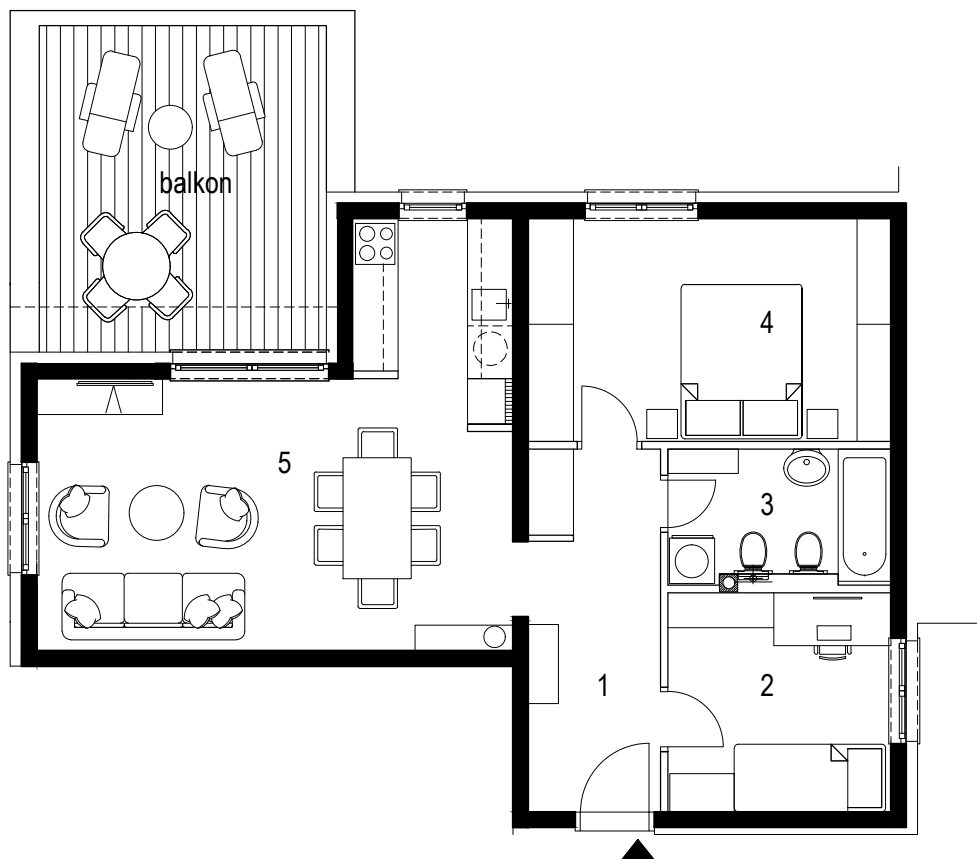
1. hodnik	10.45 m <sup>2</sup>
2. spavaća soba 1	15.36 m <sup>2</sup>
3. kupaonica	3.50 m <sup>2</sup>
4. spavaća soba 2	9.85 m <sup>2</sup>
5. spavaća soba 3	9.85 m <sup>2</sup>
6. kupaonica	4.90 m <sup>2</sup>
7. d.b.+blag.+kuh.	41.16 m <sup>2</sup>
8. spremište	2.60 m <sup>2</sup>

ukupno zatvorenih prostorija: 97.67 m<sup>2</sup>+ terasa 19.47 m<sup>2</sup> (11.20 x 0.5) +  
(55.48 x 0.25)ukupno stan : 117.14 m<sup>2</sup>





ORIJENTACIJA

**stan SB 3-2**

lokacija: uvučeni kat

1. hodnik	7.50 m <sup>2</sup>
2. spavaća soba 1	9.00 m <sup>2</sup>
3. kupaonica	5.30 m <sup>2</sup>
4. spavaća soba 2	14.15 m <sup>2</sup>
5. d.b.+blag.+kuh.	27.17 m <sup>2</sup>

ukupno zatvorenih prostorija: 63.12 m<sup>2</sup>+ balkon 4.62 m<sup>2</sup> (2.20 x 0.5) + (14.11 x 0.25)

ukupno stan:	67.74 m <sup>2</sup>
--------------	----------------------

